

Hornsea Project Three
Offshore Wind Farm



Hornsea Project Three Offshore Wind Farm

Offshore Order Limits and Grid Coordinates Plan
PINS Document Reference: A2.2.1
APFP Regulation: 5(2)(j)(ii)

Date: May 2018

Hornsea 3 
Offshore Wind Farm

 Orsted

Plans and Drawings

Offshore Order Limits and Grid Coordinates Plan

Report Number: A2.2.1

Version: Final

Date: May 2018

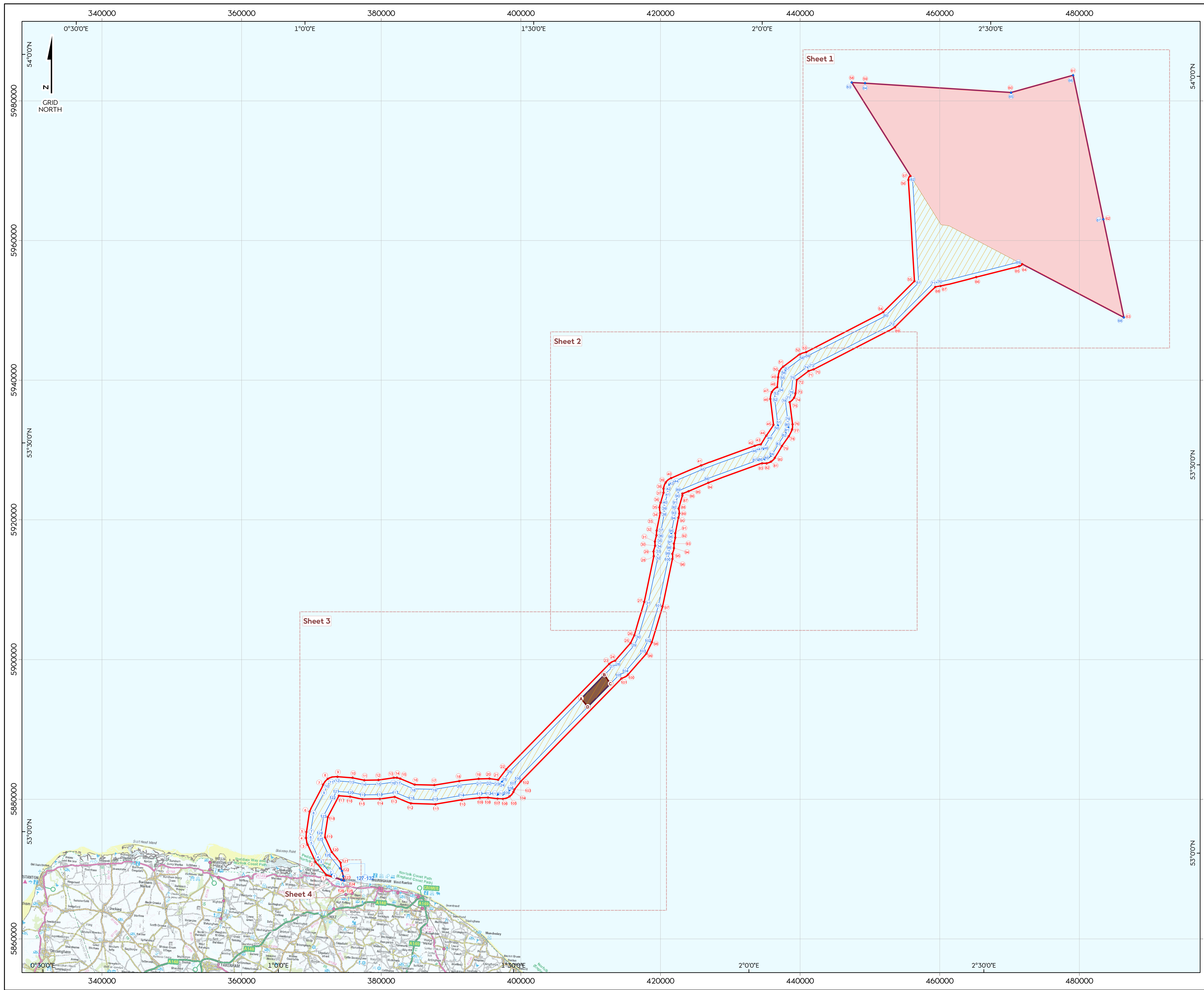
Ørsted

5 Howick Place,

London, SW1P 1WG

© Orsted Power (UK) Ltd, 2018. All rights reserved

Front cover picture: Kite surfer near a UK offshore wind farm © Orsted Hornsea Project Three (UK) Ltd., 2018

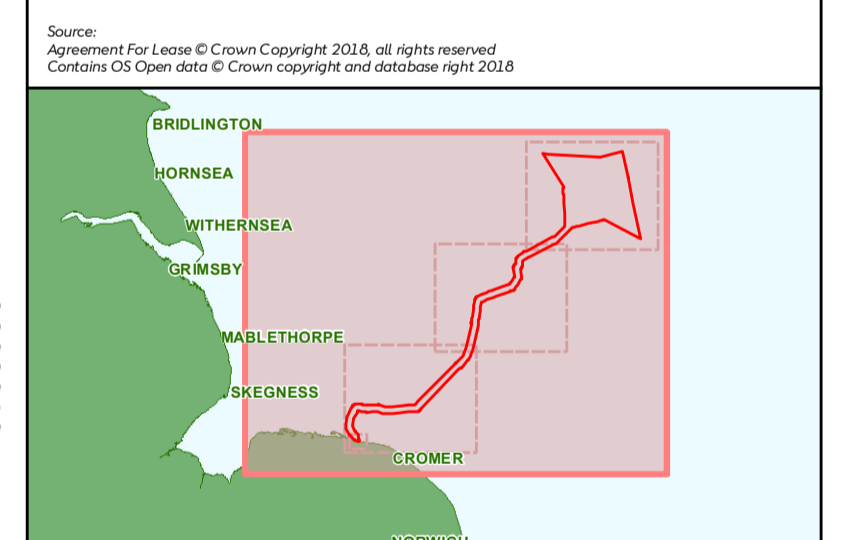


Hornsea Project Three Offshore Wind Farm Offshore Order Limits and Grid Coordinates Plan Index Sheet

APPF Regulations Reference: S2(1)(11) Application Document Number: A2.2.1

- Hornsea Project Three**
- ① Order limits node (point)*
 - Ⓛ Limit of Deviation node (point)**
 - Ⓐ Offshore HVAC booster station node (point)***
 - Order Limits (offshore)
 - Limit of Deviation (excluding temporary construction area)
 - Offshore wind farm array area
 - Offshore export cable corridor
 - Offshore HVAC booster station search area

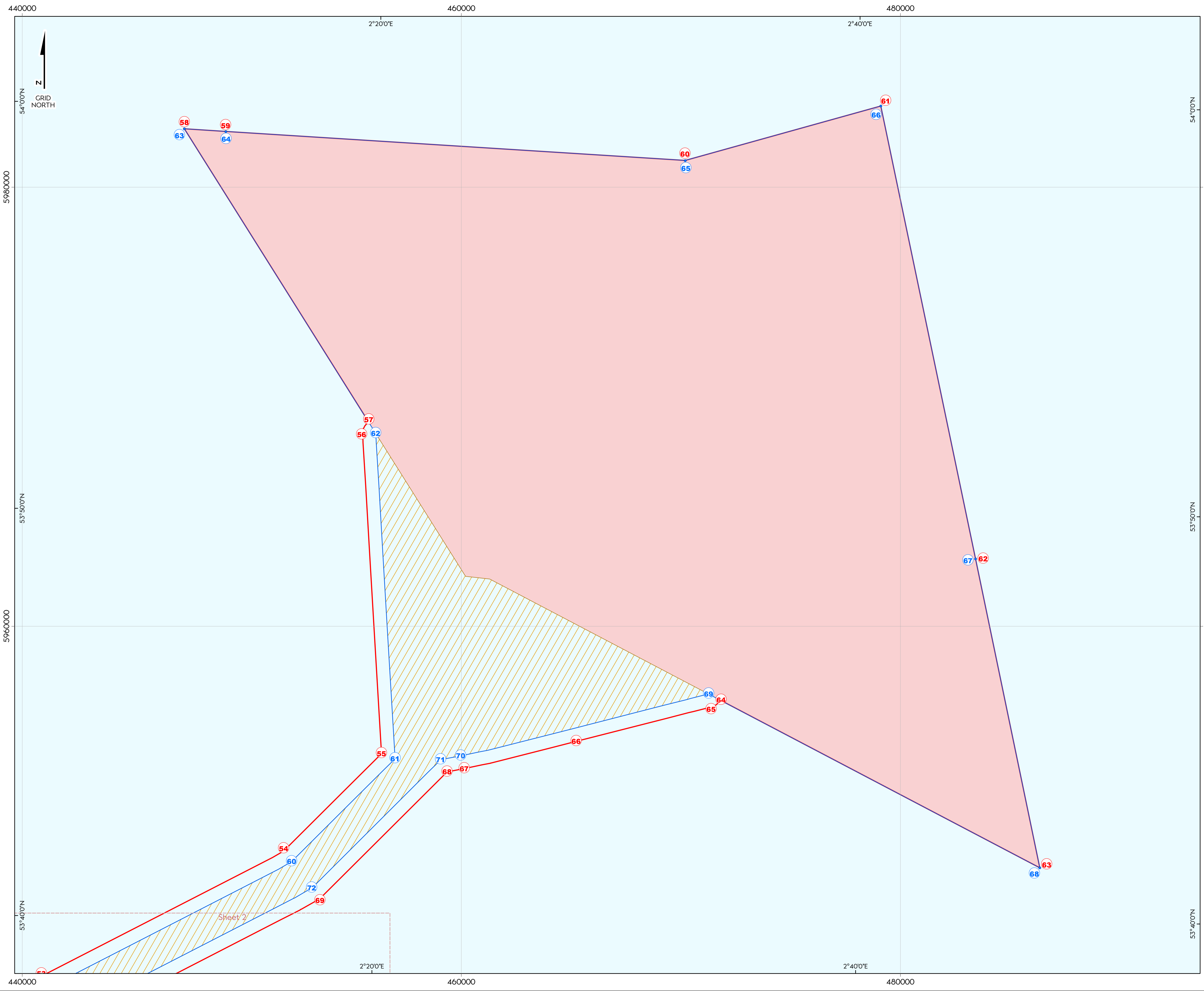
Note :
 *Order Limit node point coordinates are presented on sheet 5
 **Limit of Deviation node point coordinates are presented on sheet 5
 ***Offshore HVAC booster station search area node point coordinates are presented on sheet 5
 Due to the complexity of the shape, only key co-ordinates are displayed in table. Do not recreate vector data (GIS/CAD) from coordinates in table. If vector data is required, please contact a member of the Orsted GIS team.



Coordinate system: ETRS 1989 UTM Zone 31N
 Vertical reference: LAT
 Scale @ A1: 1:250000

REV	REMARK	DATE
00	First Issue	May 2018
...
...
...
...

Hornsea Project Three Offshore Wind Farm
 APPF Regulations Reference: S2(1)(11)
 Application Document Number: A2.2.1
 Document no: HORNSEAAPP13
 Created by: XAMI
 Checked by: JSRACNATHO
 Approved by: SOPRA/STLV



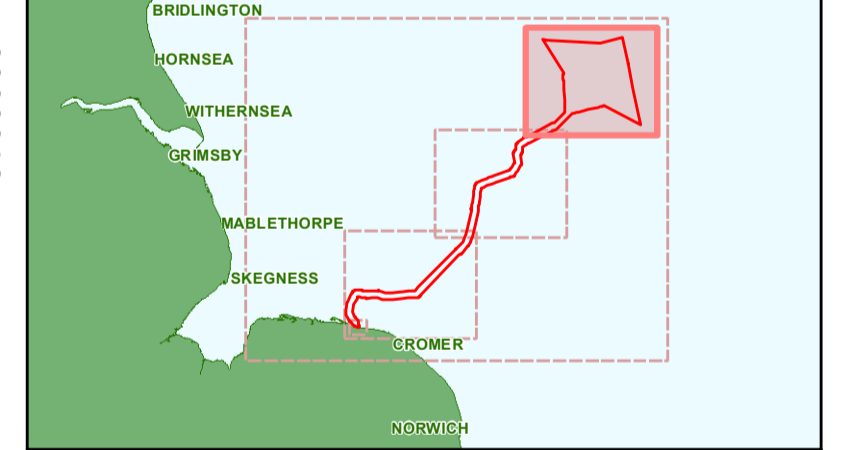
Hornsea Project Three Offshore Wind Farm Offshore Order Limits and Grid Coordinates Plan Sheet 1 of 5

APP Regulations Reference: S2(I)(II) Application Document Number: A2.2.1

- Hornsea Project Three**
- ① Order limits node (point)*
 - ② Limit of Deviation node (point)**
 - Order Limits (offshore)
 - Limit of Deviation (excluding temporary construction area)
 - Offshore wind farm array area
 - Offshore export cable corridor

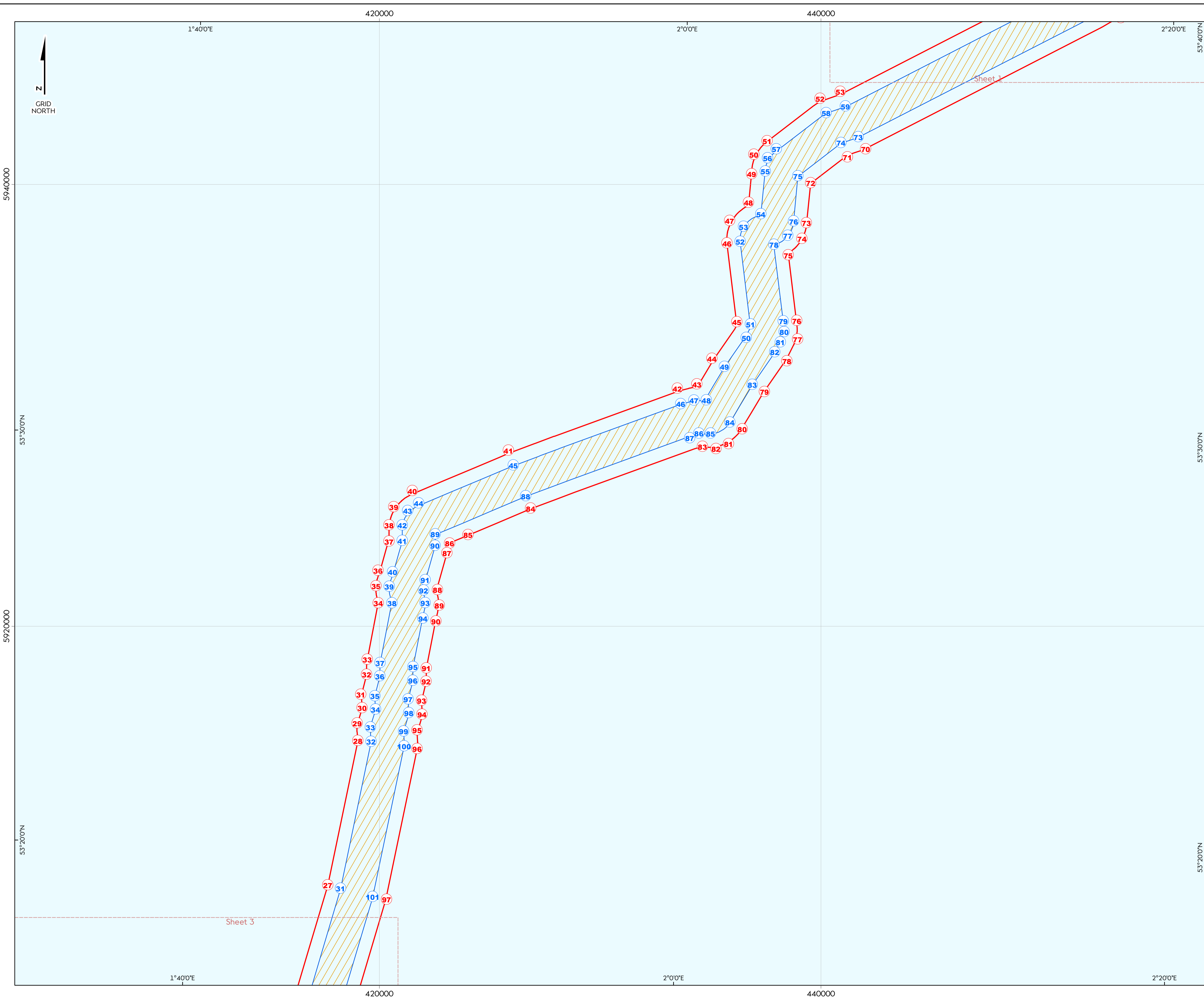
Note :
 *Order Limit node point coordinates are presented on sheet 5
 **Limit of Deviation node point coordinates are presented on sheet 5
 ***Offshore HVAC booster station search area node point coordinates are presented on sheet 5
 Due to the complexity of the shape, only key co-ordinates are displayed in table. Do not recreate vector data (GIS/CAD) from coordinates in table. If vector data is required, please contact a member of the Orsted GIS team.

Source:
 Agreement For Lease © Crown Copyright 2018, all rights reserved.
 Contains OS Open data © Crown copyright and database right 2018



Coordinate system: ETRS 1989 UTM Zone 31N
 Vertical reference: LAT
 Scale @ A1: 1:80000

REV	REMARK	DATE
00	First Issue	May 2018
...
...
...
...

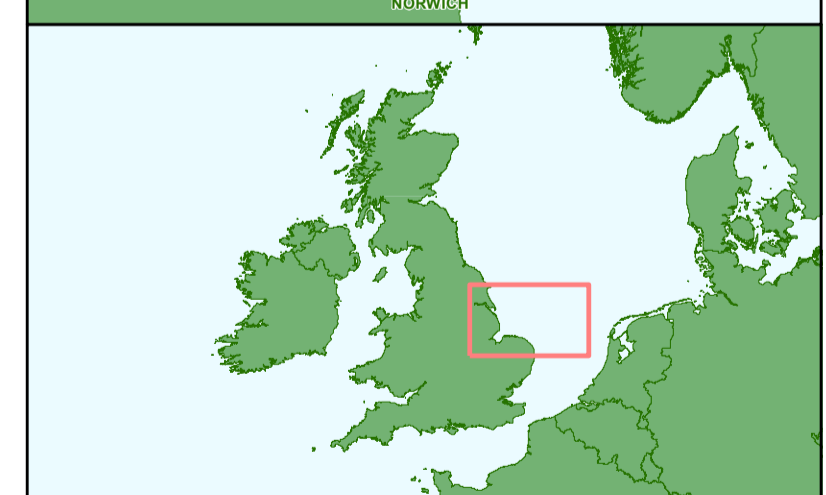
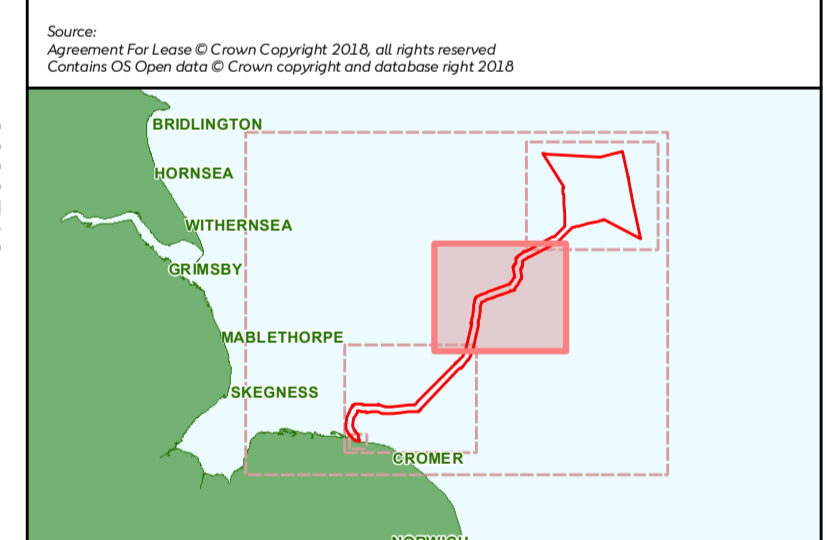


Hornsea Project Three Offshore Wind Farm Offshore Order Limits and Grid Coordinates Plan Sheet 2 of 5

APP Regulations Reference: 5(2)(f)(ii) Application Document Number: A2.2.1

- Hornsea Project Three**
- ① Order limits node (point)*
 - ② Limit of Deviation node (point)**
 - Order Limits (offshore)
 - Limit of Deviation (excluding temporary construction area)
 - ▨ Offshore export cable corridor

Note :
 * Order Limit node point coordinates are presented on sheet 5
 ** Limit of Deviation node point coordinates are presented on sheet 5
 *** Offshore HVAC booster station search area node point coordinates are presented on sheet 5
 Due to the complexity of the shape, only key co-ordinates are displayed in table. Do not recreate vector data (GIS/CAD) from coordinates in table. If vector data is required, please contact a member of the Orsted GIS team.

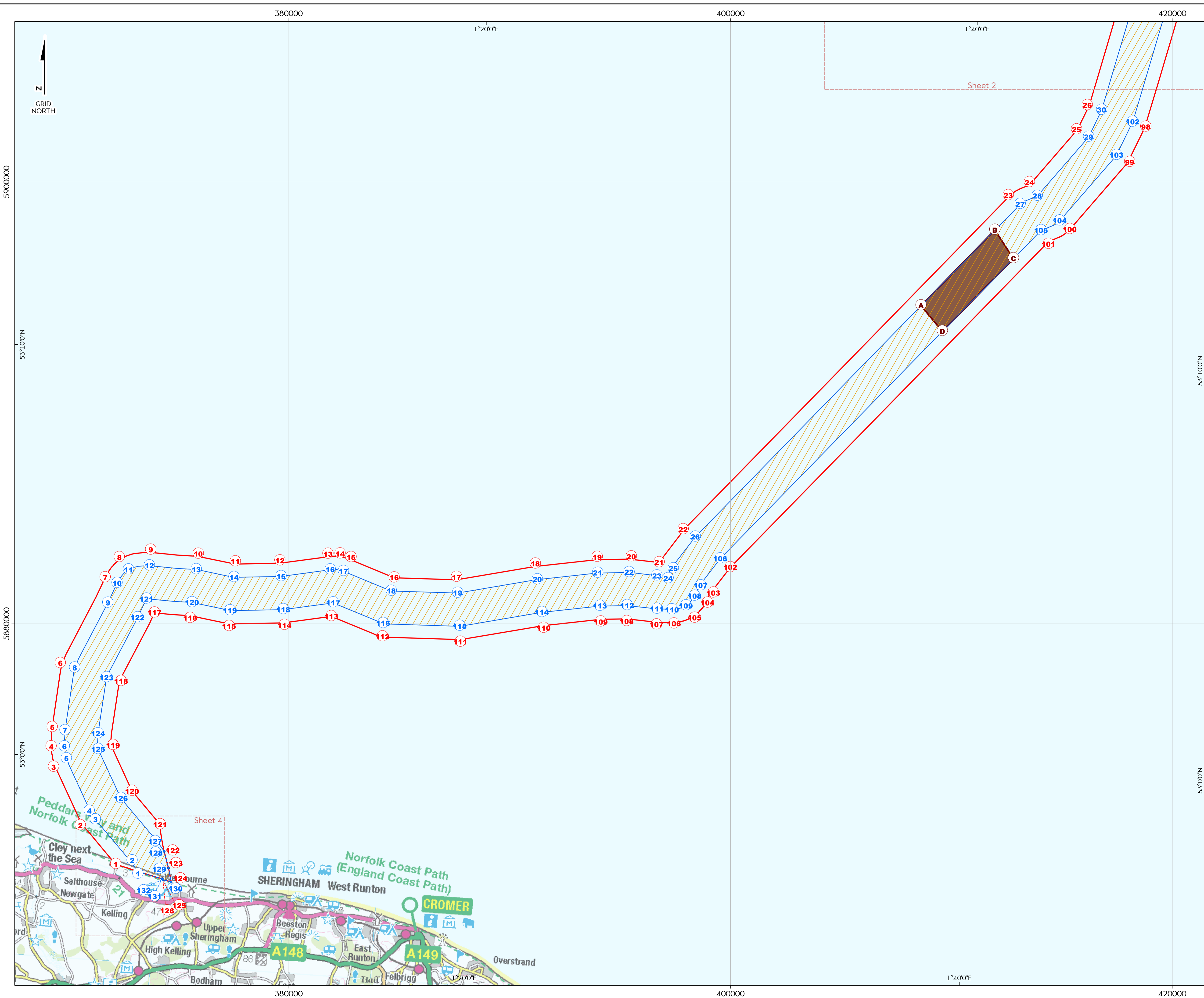


Coordinate system: ETRS 1989 UTM Zone 31N
 Vertical reference: LAT
 Scale @ A1: 1:80000

REV	REMARK	DATE
00	First Issue	May 2018
...
...
...
...

Hornsea Project Three Offshore Wind Farm
 APP Regulations Reference: 5(2)(f)(ii)
 Application Document Number: A2.2.1
 Document no: HDW03APP13
 Created by: XAMU
 Checked by: JRAC/NATHO
 Approved by: SOPBA/STLIV





Hornsea Project Three Offshore Wind Farm

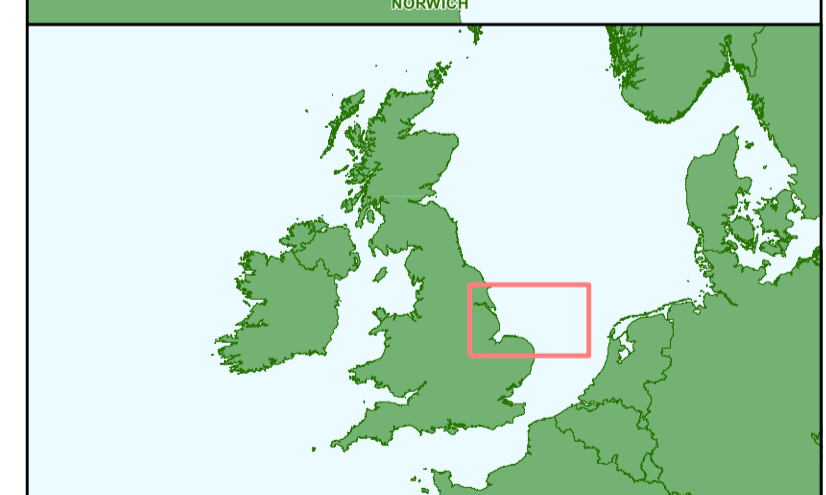
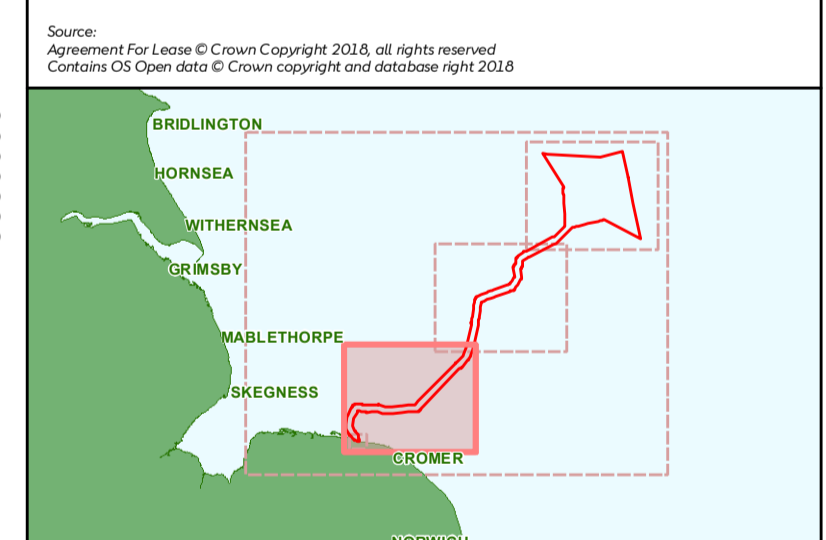
Offshore Order Limits and Grid Coordinates Plan

Sheet 3 of 5

APP Regulations Reference: S2(I)(II) Application Document Number: A2.2.1

- Hornsea Project Three**
- ① Order limits node (point)*
 - ② Limit of Deviation node (point)**
 - Ⓐ Offshore HVAC booster station node (point)***
 - Order Limits (offshore)
 - Limit of Deviation (excluding temporary construction area)
 - Offshore export cable corridor
 - Offshore HVAC booster station search area

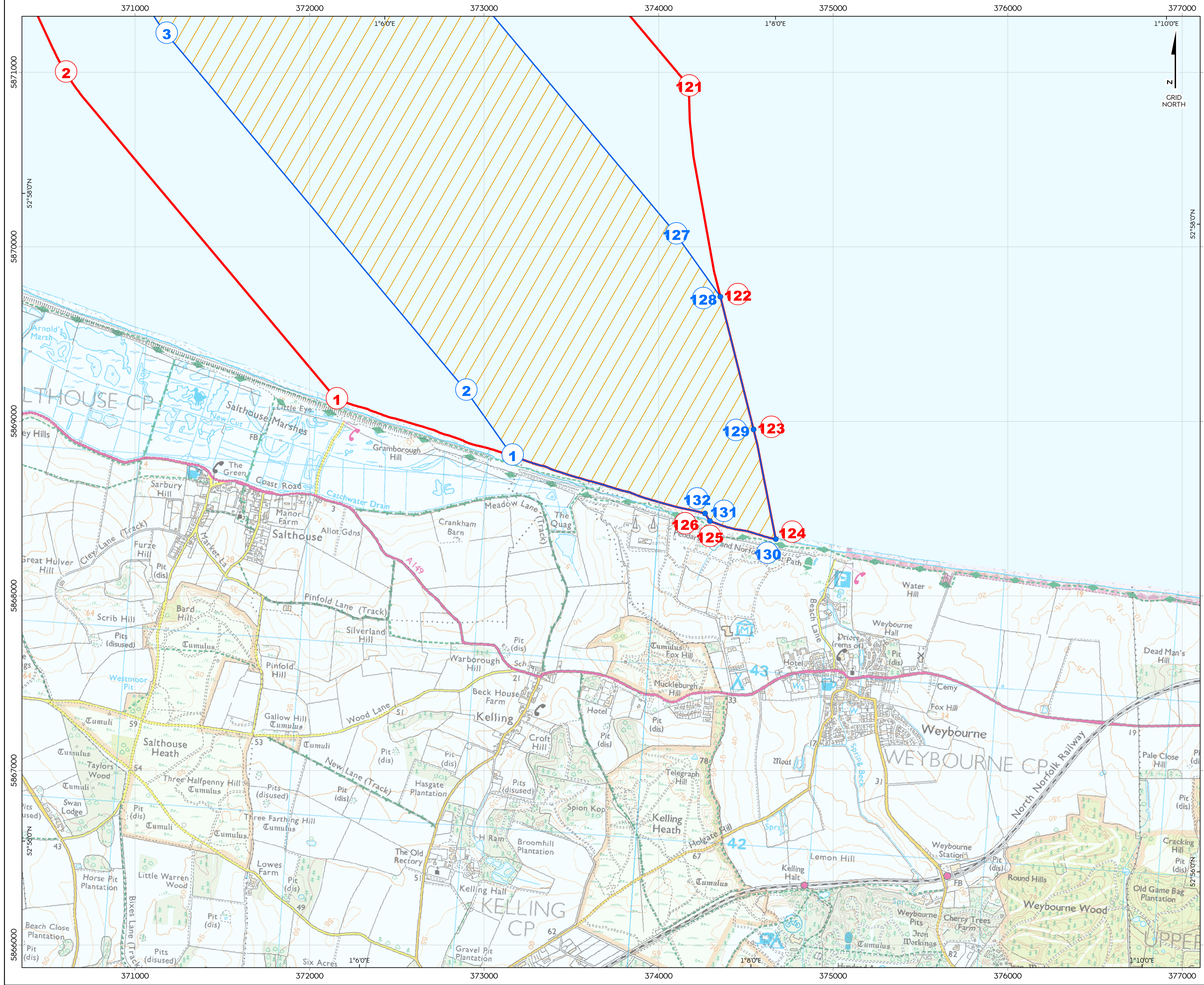
Note:
 *Order Limit node point coordinates are presented on sheet 5
 **Limit of Deviation node point coordinates are presented on sheet 5
 ***Offshore HVAC booster station search area node point coordinates are presented on sheet 5
 Due to the complexity of the shape, only key co-ordinates are displayed in table. Do not recreate vector data (GIS/CAD) from coordinates in table. If vector data is required, please contact a member of the Orsted GIS team.



Coordinate system: ETRS 1989 UTM Zone 31N
 Vertical reference: LAT
 Scale @ A1: 1:80000

REV	REMARK	DATE
00	First Issue	May 2018

Hornsea Project Three Offshore Wind Farm
 APP Regulations Reference: S2(I)(II)
 Application Document Number: A2.2.1
 Document no: HORNSEA/P13
 Created by: XAMI
 Checked by: JSR/CNAT/KO
 Approved by: SOP/BA/STL/V



Hornsea Project Three Offshore Wind Farm

Offshore Order Limits and Grid Coordinates Plan

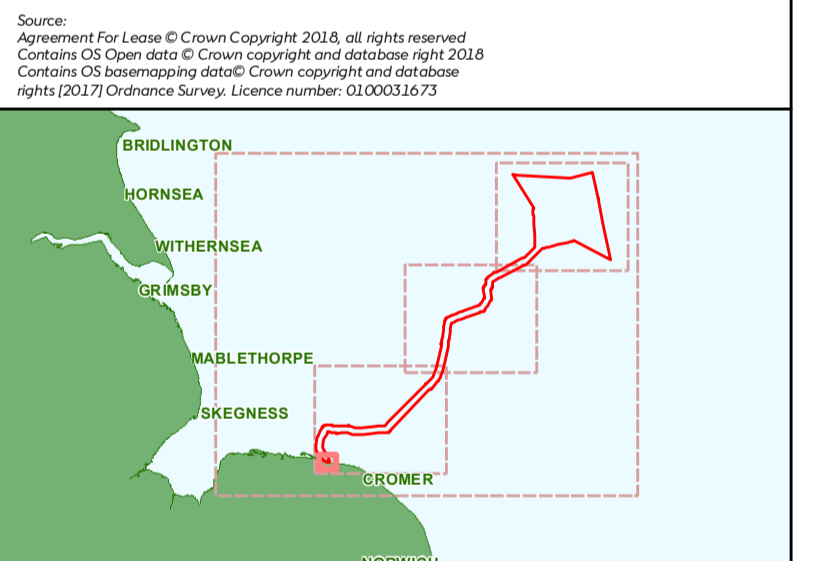
Sheet 4 of 5

APP Regulations Reference: S2(1)(H) Application Document Number: A2.2.1

- Hornsea Project Three**
- ① Order limits node (point)*
 - ② Limit of Deviation node (point)**
 - Order Limits (offshore)
 - Limit of Deviation (excluding temporary construction area)
 - Offshore export cable corridor

Note:
 *Order Limit node point coordinates are presented on sheet 5
 **Limit of Deviation node point coordinates are presented on sheet 5
 ***Offshore HVAC booster station search area node point coordinates are presented on sheet 5

Due to the complexity of the shape, only key co-ordinates are displayed in table. Do not recreate vector data (GIS/CAD) from coordinates in table. If vector data is required, please contact a member of the Orsted GIS team.



Coordinate system: ETRS 1989 UTM Zone 31N
 Vertical reference: LAT
 Scale @ A1: 1:10000

0 0.1 0.2 0.4 0.6 0.8 Kilometres
 0 0.05 0.1 0.2 0.3 0.4 Nautical Miles

REV	REMARK	DATE
00	First Issue	May 2018

Hornsea Project Three Offshore Wind Farm
 APP Regulations Reference: S2(1)(H)
 Application Document Number: A2.2.1
 Document no: HDVDSAPP13
 Created by: XAMI
 Checked by: JBRAC/NATKO
 Approved by: SCORBA/STLV



Offshore Limit of Deviation Coordinates

Offshore Development Area Coordinates				
Development Area Node Point	ETRS89 UTM Zone 31N (metres)		ETRS89 (Degrees Minutes Seconds)	
	Easting	Northing	Latitude	Longitude
1	373163	5868801	52° 57' 13.747" N	1° 6' 42.996" E
2	372897	5869174	52° 57' 25.559" N	1° 6' 28.234" E
3	371181	5871218	52° 58' 30.208" N	1° 4' 53.410" E
4	371076	5871383	52° 58' 35.458" N	1° 4' 47.535" E
5	369924	5873909	52° 59' 56.141" N	1° 3' 42.156" E
6	369831	5874448	53° 0' 13.492" N	1° 3' 36.365" E
7	369868	5875178	53° 0' 37.149" N	1° 3' 37.280" E
8	370300	5878011	53° 2' 9.166" N	1° 3' 56.345" E
9	371806	5880948	53° 3' 45.457" N	1° 5' 12.986" E
10	372224	5881838	53° 4' 14.604" N	1° 5' 34.150" E
11	372741	5882446	53° 4' 34.716" N	1° 6' 1.049" E
12	373687	5882632	53° 4' 41.545" N	1° 6' 51.573" E
13	375811	5882458	53° 4' 37.693" N	1° 8' 45.905" E
14	377515	5882102	53° 4' 27.599" N	1° 10' 17.913" E
15	379645	5882146	53° 4' 30.774" N	1° 12' 12.257" E
16	381918	5882454	53° 4' 42.565" N	1° 14' 13.915" E
17	382474	5882381	53° 4' 40.642" N	1° 14' 43.919" E
18	384638	5881489	53° 4' 13.464" N	1° 16' 41.290" E
19	387637	5881397	53° 4' 12.799" N	1° 19' 22.494" E
20	391248	5882007	53° 4' 35.220" N	1° 22' 35.697" E
21	393977	5882301	53° 4' 46.716" N	1° 25' 1.921" E
22	395399	5882329	53° 4' 48.636" N	1° 26' 18.291" E
23	396776	5882172	53° 4' 44.518" N	1° 27' 32.414" E
24	397128	5882165	53° 4' 44.523" N	1° 27' 51.351" E
25	397284	5882485	53° 4' 54.976" N	1° 27' 59.393" E
26	398396	5883934	53° 5' 42.623" N	1° 28' 57.465" E
27	413109	5898986	53° 13' 58.956" N	1° 41' 53.504" E
28	413882	5899358	53° 14' 11.452" N	1° 42' 34.859" E
29	416206	5902029	53° 15' 39.193" N	1° 44' 37.633" E
30	416797	5903244	53° 16' 18.855" N	1° 45' 8.361" E
31	418248	5908119	53° 18' 57.387" N	1° 46' 22.152" E
32	419628	5914762	53° 22' 33.040" N	1° 47' 30.670" E
33	419594	5915409	53° 22' 53.981" N	1° 47' 28.234" E

Offshore Order Limit Coordinates

Offshore Order Limit Coordinates				
Order Limit Node Point	ETRS89 UTM Zone 31N (metres)		ETRS89 (Degrees Minutes Seconds)	
	Easting	Northing	Latitude	Longitude
1	372156	5869123	52° 57' 23.299" N	1° 5' 48.611" E
2	370604	5870996	52° 58' 22.516" N	1° 4' 22.810" E
3	369431	5873519	52° 59' 43.107" N	1° 3' 16.300" E
4	369230	5874443	53° 0' 12.806" N	1° 3' 4.176" E
5	369281	5875323	53° 0' 41.322" N	1° 3' 5.626" E
6	369736	5878218	53° 2' 15.365" N	1° 3' 25.796" E
7	371681	5882093	53° 4' 22.383" N	1° 5' 4.618" E
8	372326	5882891	53° 4' 48.739" N	1° 5' 38.118" E
9	373744	5883230	53° 5' 0.912" N	1° 6' 53.813" E
10	375899	5883051	53° 4' 56.963" N	1° 8' 49.809" E
11	377574	5882703	53° 4' 47.089" N	1° 10' 20.278" E
12	379598	5882745	53° 4' 50.116" N	1° 12' 8.936" E
13	381809	5883046	53° 5' 1.606" N	1° 14' 7.325" E
14	382233	5883053	53° 5' 2.192" N	1° 14' 30.074" E
15	382703	5882936	53° 4' 58.764" N	1° 14' 55.483" E
16	384766	5882085	53° 4' 32.854" N	1° 16' 47.381" E
17	387596	5881998	53° 4' 32.226" N	1° 19' 19.524" E
18	391161	5882600	53° 4' 54.358" N	1° 22' 30.281" E
19	393960	5882901	53° 5' 6.119" N	1° 25' 0.202" E
20	395504	5882922	53° 5' 7.887" N	1° 26' 23.233" E
21	396761	5882778	53° 5' 4.100" N	1° 27' 30.916" E
22	397892	5884265	53° 5' 52.998" N	1° 28' 30.016" E
23	412656	5899382	53° 14' 11.509" N	1° 41' 28.704" E
24	413522	5899859	53° 14' 27.431" N	1° 42' 14.962" E
25	415701	5902363	53° 15' 49.705" N	1° 44' 10.074" E
26	416236	5903463	53° 16' 25.597" N	1° 44' 37.874" E
27	417665	5908266	53° 19' 1.814" N	1° 45' 50.556" E
28	419024	5914800	53° 22' 33.955" N	1° 46' 57.914" E
29	418998	5915478	53° 22' 55.872" N	1° 46' 55.918" E
30	419223	5916287	53° 23' 22.176" N	1° 47' 7.319" E
31	419204	5916893	53° 23' 41.762" N	1° 47' 5.727" E
32	419422	5917801	53° 24' 11.270" N	1° 47' 16.705" E

Offshore HVAC Booster Station Search Area Coordinates

Offshore HVAC Booster Station Search Area Coordinates				
Node Point	ETRS89 UTM Zone 31N (metres)		ETRS89 (Degrees Minutes Seconds)	
	Easting	Northing	Latitude	Longitude
A	408621	5894396	53° 11' 27.737" N	1° 37' 56.243" E
B	411965	5897818	53° 13' 20.476" N	1° 40' 53.026" E
C	412800	5896526	53° 12' 39.177" N	1° 41' 39.298" E
D	409583	5893234	53° 10' 50.756" N	1° 38' 49.262" E

Offshore Development Area Coordinates				
Development Area Node Point	ETRS89 UTM Zone 31N (metres)		ETRS89 (Degrees Minutes Seconds)	
	Easting	Northing	Latitude	Longitude
34	419828	5916217	53° 23' 20.239" N	1° 47' 40.160" E
35	419800	5916824	53° 23' 39.870" N	1° 47' 38.053" E
36	420021	5917722	53° 24' 9.030" N	1° 47' 49.209" E
37	420034	5918321	53° 24' 28.403" N	1° 47' 49.348" E
38	420568	5921028	53° 25' 56.294" N	1° 48' 15.839" E
39	420448	5921780	53° 26' 20.557" N	1° 48' 8.651" E
40	420602	5922317	53° 26' 37.995" N	1° 48' 16.501" E
41	421034	5923846	53° 27' 27.720" N	1° 48' 38.523" E
42	421037	5924439	53° 27' 46.904" N	1° 48' 38.150" E
43	421277	5925090	53° 28' 8.071" N	1° 48' 50.560" E
44	421733	5925436	53° 28' 19.536" N	1° 49' 14.967" E
45	426063	5927259	53° 29' 20.764" N	1° 53' 8.220" E
46	433643	5930038	53° 30' 54.295" N	1° 59' 57.320" E
47	434244	5930203	53° 30' 59.926" N	2° 0' 29.822" E
48	434715	5930207	53° 31' 0.269" N	2° 0' 55.406" E
49	435627	5931725	53° 31' 49.770" N	2° 1' 43.788" E
50	436610	5933146	53° 32' 36.179" N	2° 2' 36.155" E
51	436805	5933527	53° 32' 48.586" N	2° 2' 46.474" E
52	436332	5937381	53° 34' 53.095" N	2° 1' 17.907" E
53	436489	5938061	53° 35' 15.151" N	2° 2' 25.939" E
54	437275	5938627	53° 35' 33.791" N	2° 3' 8.311" E
55	437470	5940678	53° 36' 40.255" N	2° 3' 17.397" E
56	437578	5941047	53° 36' 52.248" N	2° 3' 23.023" E
57	437926	5941458	53° 37' 5.682" N	2° 3' 41.655" E
58	440231	5943203	53° 38' 1.077" N	2° 5' 45.864" E
59	441100	5943504	53° 38' 13.197" N	2° 6' 32.979" E
60	452271	5949279	53° 41' 24.136" N	2° 16' 37.963" E
61	456978	5953968	53° 43' 57.331" N	2° 20' 52.216" E
62	456099	5968784	53° 51' 56.463" N	2° 19' 56.678" E
63	447378	5982658	53° 59' 22.420" N	2° 11' 50.694" E
64	449271	5982540	53° 59' 19.280" N	2° 13' 34.691" E
65	470194	5981223	53° 58' 42.514" N	2° 32' 43.904" E
66	479109	5983693	54° 0' 4.028" N	2° 40' 52.651" E

Offshore Order Limit Coordinates				
Order Limit Node Point	ETRS89 UTM Zone 31N (metres)		ETRS89 (Degrees Minutes Seconds)	
	Easting	Northing	Latitude	Longitude
33	419452	5918479	53° 24' 33.225" N	1° 47' 17.703" E
34	419952	5921030	53° 25' 56.028" N	1° 47' 42.459" E
35	419849	5921802	53° 26' 20.933" N	1° 47' 36.143" E
36	420032	5922505	53° 26' 43.765" N	1° 47' 45.202" E
37	420434	5923931	53° 27' 30.131" N	1° 48' 5.945" E
38	420437	5924442	53° 27' 46.677" N	1° 48' 5.619" E
39	420744	5925377	53° 28' 17.076" N	1° 48' 21.428" E
40	421500	5925989	53° 28' 37.302" N	1° 49' 1.846" E
41	425842	5927817	53° 29' 38.707" N	1° 52' 55.786" E
42	433496	5930620	53° 31' 13.071" N	1° 59' 48.933" E
43	434379	5930813	53° 31' 19.720" N	2° 0' 36.709" E
44	435147	5932086	53° 32' 1.260" N	2° 1' 17.462" E
45	436188	5933636	53° 32' 51.864" N	2° 2' 12.822" E
46	435736	5937308	53° 34' 50.465" N	2° 1' 45.585" E
47	435951	5938331	53° 35' 23.664" N	2° 1' 56.535" E
48	436713	5939039	53° 35' 46.884" N	2° 2' 37.417" E
49	436850	5940439	53° 36' 32.251" N	2° 2' 43.845" E
50	437044	5941322	53° 37' 0.888" N	2° 2' 53.784" E
51	437560	5941934	53° 37' 20.916" N	2° 3' 21.412" E
52	439956	5943737	53° 38' 20.262" N	2° 5' 30.569" E
53	440866	5944058	53° 38' 31.038" N	2° 6' 19.862" E
54	451903	5949759	53° 41' 39.572" N	2° 16' 17.662" E
55	456363	5954202	53° 44' 4.728" N	2° 20' 18.541" E
56	455502	5968723	53° 51' 54.307" N	2° 19' 24.004" E
57	455780	5969292	53° 52' 12.798" N	2° 19' 38.938" E
58	447378	5982658	53° 59' 22.420" N	2° 11' 50.694" E
59	449271	5982540	53° 59' 19.280" N	2° 13' 34.691" E
60	470194	5981223	53° 58' 42.514" N	2° 32' 43.904" E
61	479109	5983693	54° 0' 4.028" N	2° 40' 52.651" E
62	483429	5963065	53° 48' 57.136" N	2° 44' 53.902" E
63	486351	5948995	53° 41' 22.175" N	2° 47' 35.927" E
64	471793	5956636	53° 45' 27.296" N	2° 34' 19.781" E

Offshore Development Area Coordinates				
Development Area Node Point	ETRS89 UTM Zone 31N (metres)		ETRS89 (Degrees Minutes Seconds)	
	Easting	Northing	Latitude	Longitude
67	483429	5963065	53° 48' 57.136" N	2° 44' 53.902" E
68	486351	5948995	53° 41' 22.175" N	2° 47' 35.927" E
69	471262	5956914	53° 45' 36.213" N	2° 33' 50.680" E
70	459970	5954099	53° 44' 2.423" N	2° 23' 35.432" E
71	459055	5953920	53° 43' 56.388" N	2° 22' 45.606" E
72	453182	5948079	53° 40' 45.630" N	2° 17' 28.307" E
73	441676	5942117	53° 37' 28.555" N	2° 7' 5.311" E
74	440901	5941853	53° 37' 19.715" N	2° 6' 23.300" E
75	438949	5940353	53° 36' 30.356" N	2° 4' 38.128" E
76	438751	5938302	53° 35' 23.925" N	2° 4' 28.780" E
77	438495	5937653	53° 35' 2.812" N	2° 4' 15.308" E
78	437860	5937245	53° 34' 49.344" N	2° 3' 41.084" E
79	438306	5933615	53° 32' 52.099" N	2° 4' 7.919" E
80	438300	5933267	53° 32' 40.809" N	2° 4' 7.836" E
81	438213	5932984	53° 32' 31.642" N	2° 4' 3.324" E
82	437905	5932385	53° 32' 12.110" N	2° 3' 4